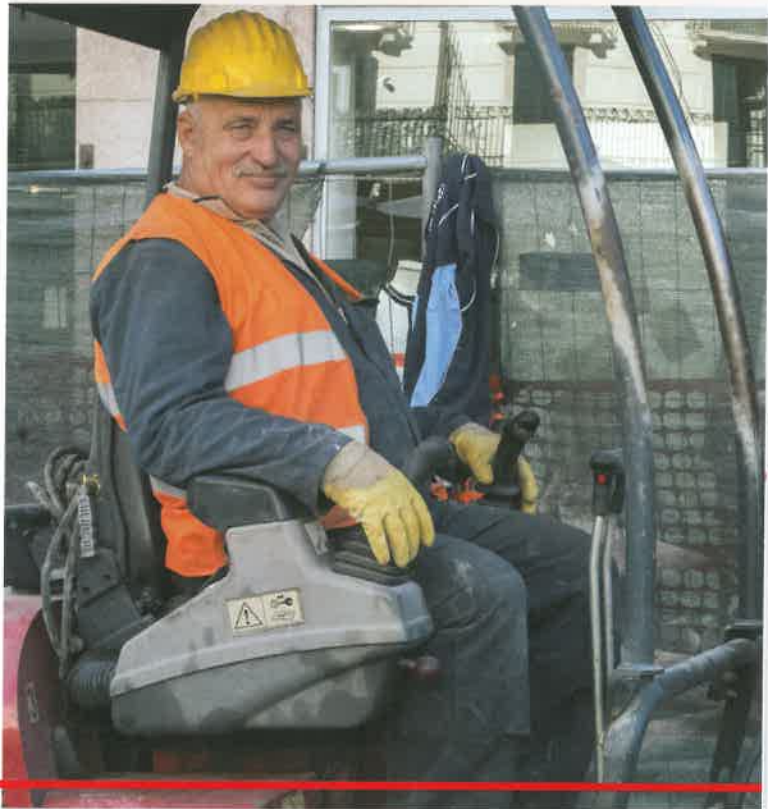


PHILLIPS 66
PIPELINE LLC



*Important safety
guidelines for
excavators,
contractors,
landscapers and
farmers*

WORKING & DIGGING NEAR PIPELINES



If a pipeline has been pulled, jarred, snagged, nicked, dented, scraped or touched in any way, dial 911 to report. Then contact the Phillips 66 Pipeline LLC emergency line at 1-877-267-2290.

You received this brochure because your job duties may require you, or someone on your staff, to dig or excavate near a Phillips 66 Pipeline LLC pipeline.

Phillips 66 Pipeline LLC operates approximately 15,000 miles of pipeline and more than 50 storage terminals. Each day we safely transport raw petroleum products, like crude oil, and refined products, like gasoline, diesel and jet fuel. Energy products like these are part of our daily lives and necessary to fuel our cars, cool our homes and to create plastics products.

CRITICAL PIPELINE SAFETY INFO TO SHARE WITH YOUR COLLEAGUES.

Operating with Integrity

Pipelines are the most reliable method to move energy products, helping to meet our nation's growing economic and energy needs. They operate under many government regulations and industry standards. These measures address all aspects of pipeline operation, such as where and how they are built, operated, tested and maintained – and we strive to exceed each requirement and best practice.

Committed to Safety & Reliability

As part of our on-going damage prevention program, we employ many tactics to ensure the safety of our communities. We inspect surface conditions via air or on foot, provide operational and safety training for our employees, use sophisticated technology to monitor our lines 24-hours a day, proactively clear easements and share emergency preparedness materials with local officials.



Use your mobile device to instantly access and save the Phillips 66 Pipeline LLC emergency contact number by simply scanning the icon above.

Download a free scan app now at <https://scan.me/download>.

A pdf copy of this brochure can be downloaded at www.phillips66pipeline.com.

Potential Hazards of Working Near Lines

Our nation's pipeline industry maintains a consistently successful record of safety and reliability. The National Transportation Safety Board has stated that pipelines are the safest mode of transportation for energy products. That said, hazards do exist and emergencies can occur.

Depending on the energy product carried within the line, product hazards, like fire or explosion, may result in damage to the environment and loss of property or even life.

Even less significant incidents can result in dollars lost through fines, traffic disruptions and job interruptions.



FREE TAILGATE MEETING GUIDES

Phillips 66 Pipeline LLC has developed eight free meeting guides for your weekly OSHA-recommended safety tailgate meetings. To download the guides, which are based off the Common Ground Alliance's Best Practices guidance document, can be downloaded at www.bit.ly/excavators.

The free guides are available in both English and Spanish, and will help you document your safety efforts. Using the meeting guides can help mitigate service disruptions, harm to you or your employees, and possible fines and liability for tremendous repair costs.

CONTACT

Phillips 66 Pipeline LLC
3010 Briarpark Dr.
Houston, TX 77042
www.phillips66pipeline.com

NON-EMERGENCY PHONE
800-231-2566

EMERGENCY PHONE
1-877-267-2290

Because your job duties may require you, or someone on your staff, to dig near a pipeline, please review and share the following industry and government sites for important safe digging and pipeline educational resources:

EXCAVATOR AWARENESS TRAINING PORTAL

<http://tc.pipelineportal.com/p66>

COMMON GROUND ALLIANCE

www.commongroundalliance.com

811 - CALL BEFORE YOU DIG

www.call811.com

PIPELINES 101

www.pipeline101.com

ALWAYS CALL 811

Excavation is a leading cause of serious pipeline damage. Dial 811 to contact a local One-Call service to have buried utilities marked for free.

NATIONAL PIPELINE MAPPING SYSTEM

When in the planning phase for an excavation project, it may be helpful to refer to the National Pipeline Mapping System (NPMS). The NPMS is a web program which shows the approximate location of gas and hazardous liquids transmission lines near a searched address.

NPMS does not include gathering or distribution pipelines. Visit <http://www.npms.phmsa.dot.gov> to learn more.

Though both pipeline markers and the NPMS are helpful tools, they have limitations. The only way to pinpoint a pipeline's exact location is to call 811, the national "Call Before You Dig" number.

Call 811 to Connect With One-Call

Pipelines are monitored regularly, but natural elements, such as erosion and flooding can change a pipeline's depth of cover. Therefore, every digging job – large or small and repeated or not – requires you to dial 811, the federally-mandated "Call Before You Dig" phone number. Comply with the law and call at least three business days before you begin your project. It's fast, easy and free.

Phillips 66 Pipeline LLC is a member of the state One-Call center network. Calls placed to 811 are routed to your local One-Call center, which in turn contacts the appropriate company to locate pipelines, or other buried utilities. The utility owner will then mark the planned dig site with flags or paint.

811 BEST PRACTICES

- Avoid project delays by allowing adequate scheduling time.
- Provide accurate information about the dig location, and, if possible, outline proposed dig site with white paint or flags.
- Verify that operators will have access to the excavation site to mark lines. Wait until lines are located and marked before you dig.
- Once a pipeline is marked, respect the markings and dig carefully.
- Follow excavation requirements of your state's One-Call law and CGA's Best Practices. This may include hand-digging, soft-digging, vacuum methods and the use of pneumatic hand tools.
- Visit www.commonwealthdalliance.com or www.call811.com to learn more.

Safe Digging Preparation

White lining is the process of marking the planned excavation site with white paint or flags. The proposed dig site is identified by a continuous line or dash. Dots mark the site radius or arcs. Refer to the APWA Uniform Color Code Chart, like the one below at right, for clarification on color meanings.

Trained locating technicians will mark underground facilities with colored flags, stakes or paints. Once you have waited three days, you may begin your project. Never remove the flags, stakes or paint before an excavation project is completed. Visit <http://tc.pipelineportal.com/p66> to view free safe digging training videos.

Specific Considerations for Farmers and Ranchers

According to the CGA, there are 2 million farms in the United States, and 9.5 million acres are used for farming or ranching activities. These businesses are vast and uniquely at risk to come in contact with a utility buried under their land.

Rural communities contain major oil and gas pipelines, which must be avoided while digging to prevent costly accidents.

Even if you know the general location of the pipeline, always call 811 before digging. Natural elements, like erosion, may have caused the ground above or around the pipeline to change, shifting the line's depth of cover.

WHEN TO CALL

Farmers and ranchers shall call 811 before performing these tasks: chisel plowing, deep ripping or tilling, subsoiling or terracing, creek maintenance, drainage ditch clean out, waterway building, post-setting, drain tile installation or any other excavation activity.



PIPELINE MARKERS

Pipeline markers indicate that a pipeline is nearby and contain specific pipeline information.

Pipeline markers are placed along a pipeline easement, often found at road and railway crossings, fence lines and street intersections. The signs identify the type of product carried in the line, the operator's name, and the emergency phone number. Markers, similar to the illustration at left, indicate the general location of a line and never its depth.









Removing or tampering with markers is unsafe and violates federal law. If signs are missing or damaged, contact Phillips 66 Pipeline LLC at www.phillips66pipeline.com.

DIG WITH CARE

Excavation is a leading cause of serious pipeline damage. Dial 811 to contact a local One-Call service to have buried utilities marked for free.



APWA UNIFORM COLOR CODE CHART

	Proposed Excavation
	Survey Markings
	Electrical
	Gas, Petroleum, Oil, Steam
	Communications
	Potable Water
	Reclaimed Water
	Sewers and Drains

BE VIGILANT WHEN WORKING NEAR PIPELINES

If you notice something unusual in the area of a pipeline, leave immediately. Dial 911, then notify Phillips 66 Pipeline LLC at 1-877-267-2290.



Use your mobile device to instantly access and save the Phillips 66 Pipeline LLC emergency contact number by simply scanning the icon above.

Download a free scan app now at <https://scan.me/download>.



Protect, Observe & Report

If you suspect a pipeline has been hit, regardless of damage, immediately call Phillips 66 Pipeline LLC's notification hotline at **1-877-267-2290**. Even a miniscule nick in the pipeline's protective coating must be assessed. Even minor damage to a pipeline can result in future problems that could harm property, the environment or life.

Many petroleum products have a distinct odor, such as sulfur (rotten eggs), or a strong petroleum-like odor. However, do not depend on odor alone to determine a leak.

Most large-diameter pipelines are not odorized. The intensity of odor is no indication of the severity of a leak. You must be observant of visual cues or unusual sounds in the area of a pipeline.

Specific Considerations for Land-Use Planners

Help ensure that your job will not incur interruptions, a safety incident or fine by utilizing this list each time you are involved in project planning.

1. Use the National Pipeline Mapping System and 811 to find operators that should be part of the planning and zoning conversation from the start. This helps to eliminate unnecessary re-work and shore up timelines.
2. Always place a call to 811 before moving soil, engaging heavy machinery or beginning demolition work.
3. Work through these questions with the pipeline operator:
 - Is there adequate planned access to the right-of-way?
 - Have you considered evacuation routes in an emergency?
 - How can excavation damage due to construction best be prevented?
 - Are there alternative uses for the right-of-way: green space, parks, trails, etc.?

A pdf copy of this brochure can be downloaded at www.phillips66pipeline.com.

Get to Know PIPA

The Pipelines and Informed Planning Alliance (PIPA) is a broad stakeholder initiative led and supported by the US Department of Transportation's Pipeline and Hazardous Materials Safety Administration (FHMSA). The PIPA recommended practices describe actions that can be taken by stakeholders when there are proposed changes in land use or new development adjacent to existing transmission pipelines.

Help Preserve the Right-of-Way

It's important for property developers and landscapers to work closely with Phillips 66 Pipeline LLC to maintain rights-of-way and easements. Keep these areas clear of trees, shrubs, structures, equipment and other things that would impede an operator's ability to conduct inspections, make routine repairs or respond to an emergency.



Contact Information

Phillips 66 Pipeline LLC
3010 Briarpark Dr.
Houston, TX 77042
www.phillips66pipeline.com

NON-EMERGENCY PHONE NUMBER
1-800-231-2566

EMERGENCY PHONE NUMBER
1-877-267-2290

ONE-CALL ELITE PARTNER PROGRAM

Starting in 2014, Phillips 66 Pipeline LLC recognizes those companies that have the most frequent One-Call tickets submitted nearest our areas of operation and suffer no One-Call process errors that result in Phillips 66 Pipeline LLC involvement.

Recognized companies may receive free advertising in local news outlets, recommendation letters sent to the Better Business Bureau, a plaque for display in their office, free brochures to share when trying to earn new business and a reference on the Phillips 66 Pipeline LLC website (www.phillips66pipeline.com).

You can increase your chances of becoming an Elite Partner by always dialing 811 before starting any job planning or work.



Dial 911 to report any pipeline pull, jarring, snag, nick, dent, scrape or other pipeline emergency. Then connect to the Phillips 66 Pipeline LLC emergency line at 1-877-267-2290.

CONTACT US

Phillips 66 Pipeline LLC
3010 Briarpark Dr.
Houston, TX 77042
phillips66pipeline.com

NON-EMERGENCY
PHONE NUMBER
1-800-231-2566

EMERGENCY
PHONE NUMBER
1-877-267-2290

Many petroleum products have a distinct odor, such as sulfur (rotten eggs), or a strong petroleum-like odor. However, do not depend on odor alone to determine a leak. Most large diameter pipelines are not odorized, and the intensity of odor is no indication of the severity of a leak. Use visual cues or unusual sounds whenever working in the area of a pipeline.

Signs of Potential Leak:

- Strong petroleum-like or sulfur-like (rotten egg) odor
- Dead grasses or other vegetation
- Liquid or fire on the ground near a pipeline
- Dirt blowing into the air
- Fire
- Dense white cloud or fog
- Hissing, gurgling or roaring sounds

If You Suspect a Leak, DO:

- Leave the area immediately and walk into the wind and away from the site.
- Warn non-emergency persons to stay away
- Avoid contact with any fluids or vapors escaping from the pipeline.
- From a safe area, call 911 to report the suspected leak
- Call the pipeline operator using the number provided on a nearby pipeline marker, if you can do so safely. Phillips 66 Pipeline LLC's emergency phone number is 1-877-267-2290.

If You Suspect a Leak, AVOID:

- Do not operate machinery.
- Never attempt to operate pipeline valves or extinguish a pipeline fire. This could potentially prolong an incident, cause another leak in the pipeline, and risk your life and the lives of others.
- Do not create a spark. Potential ignition sources include, but are not limited to: smoking materials, open flames, cell phones, pagers, flashlights, vehicle keyless entry remotes, and motorized vehicles or equipment.

To download a copy of this brochure in English or Spanish, visit the Phillips 66 Pipeline LLC website at www.phillips66pipeline.com.